

# Construction Weekly Update

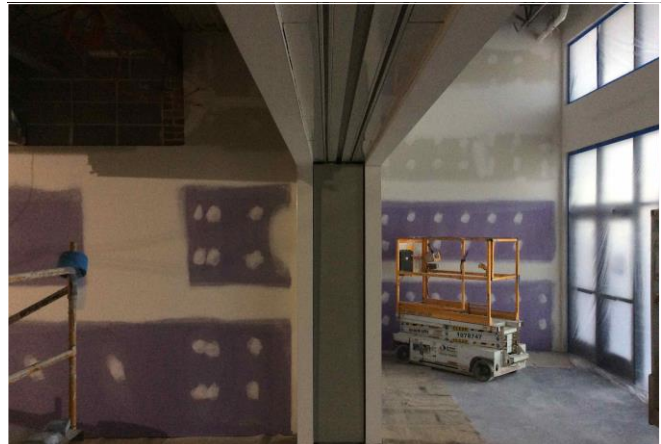
---

Week of August 3<sup>rd</sup>, 2020

School District of Manawa



Outside Fitness Atrium



Main Entrance Fire Door



Elementary School



Middle School Collaboration

## Update

Polished concrete floors finished in the High School Science Rooms. Carpet began to get installed in the middle school classrooms. Sliding Doors were installed in the high school classrooms. Ceiling grid and tiles were installed in various areas and continues to make progress. Doors and transoms continue to be installed around the school, rough ins and finishes continue to make progress. The sliding fire door was installed at the main entrance. Light fixtures installed in both middle school and high school collaboration spaces. Casework continues to be installed. Outside plumbing work finished with the new sanitary sewer line and stones were laid outside the Fitness Center Atrium. Elementary school flooring and casework was installed.

## About Hoffman

*Hoffman Planning, Design & Construction, Inc. is an integrated Total Project Management firm based in Appleton, Wisconsin. We partner with our clients to create innovative designs and build high quality, functional, attractive, energy efficient facilities at costs at or below projects delivered using traditional design and construction methods. Currently in our fifth generation of leadership, Hoffman continues to deliver the same expert service and superior value our clients have come to appreciate.*